

KING

HOME 603 E



2BD.47

**2 Bedroom + Atelier
2 Bathroom**

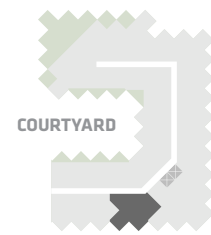
**Total Living:
1003 ft²**

Interior Living:
931 ft²

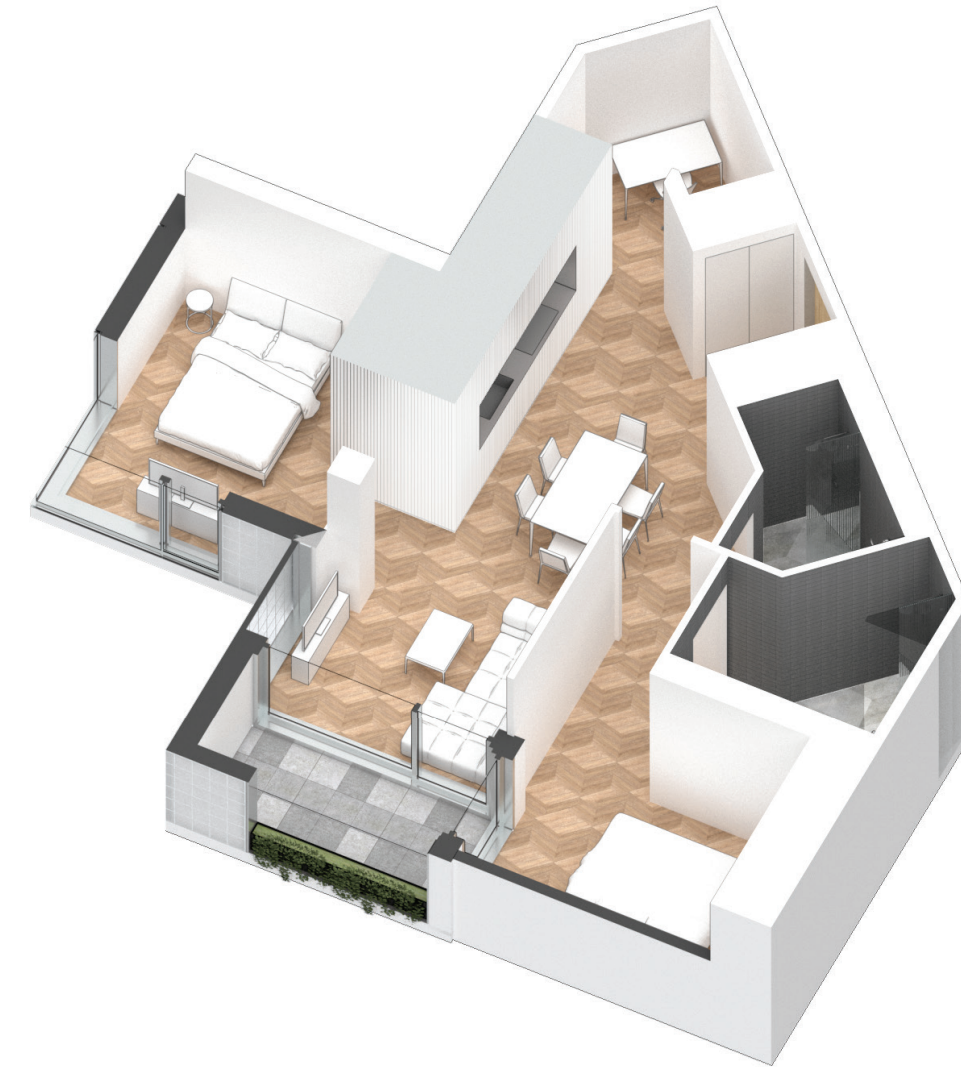
Exterior Living:
72 ft²

LIVING	11' 5" X 11' 2"
DINING	11' 4" X 7' 8"
MASTER BD	8' 11" X 11' 9"
BEDROOM 2	11' 7" X 9' 2"
ATELIER	5' 6" X 7' 1"
BALCONY	4' 11" X 11' 0"

KING STREET WEST



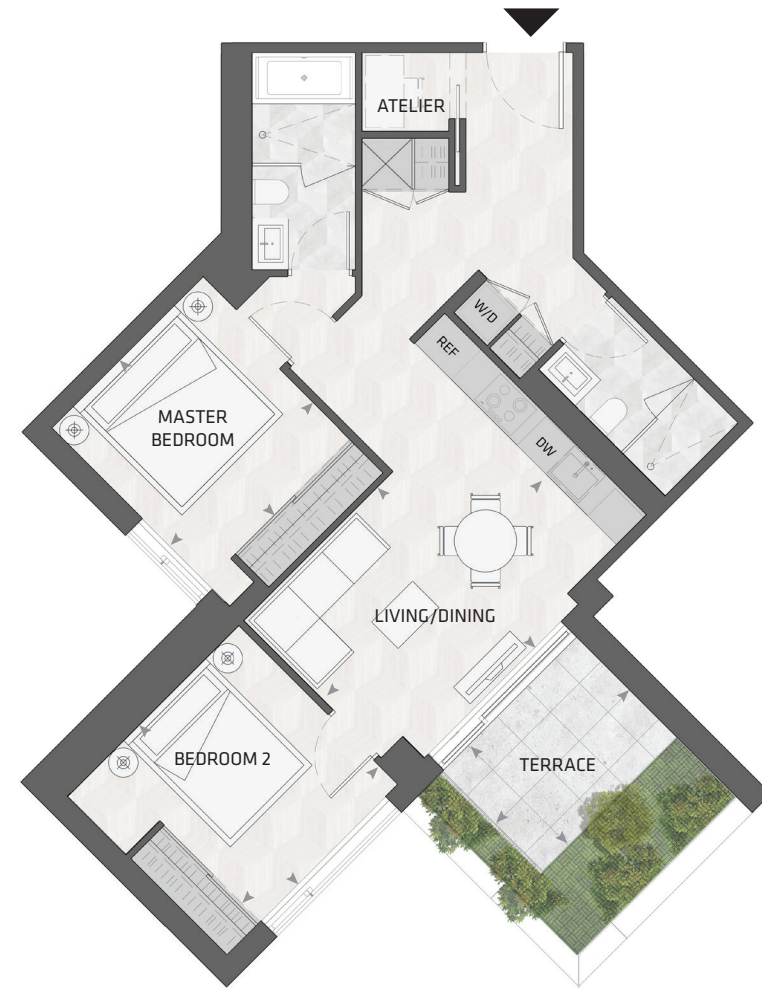
EAST MOUNTAIN KEYPLAN



All dimensions and specifications are approximate. Certain plans are reverse or mirror image. Balcony square footages are estimated and may vary from that stated. Please see Sales Representative for details. Furniture not included. Refer to key plan for unit location and orientation. E. & O.E.

KING

HOME 621 E



2BD.12

**2 Bedroom + Atelier
2 Bathroom**

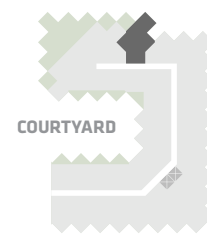
**Total Living:
1019 ft²**

Interior Living:
875 ft²

Exterior Living:
143 ft²

LIVING/ DINING	15' 3" X 10' 10"
MASTER BD	9' 10" X 10' 7"
BEDROOM 2	9' 4" X 10' 10"
ATELIER	4' 2" X 3' 10"
TERRACE	9' 1" X 6' 8"

KING STREET WEST



EAST MOUNTAIN KEYPLAN



All dimensions and specifications are approximate. Certain plans are reverse or mirror image. Balcony square footages are estimated and may vary from that stated. Please see Sales Representative for details. Furniture not included. Refer to key plan for unit location and orientation. E. & O.E.

KING

HOME 919 E



2BD.57

**2 Bedroom + Atelier
2 Bathroom**

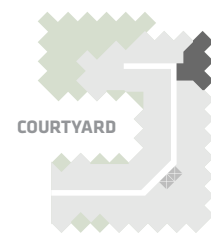
**Total Living:
980 ft²**

Interior Living:
908 ft²

Exterior Living:
72 ft²

LIVING	12' 0" X 11' 10"
DINING	8' 5" X 7' 10"
MASTER BD	11' 10" X 10' 2"
BEDROOM 2	9' 10" X 10' 10"
ATELIER	5' 4" X 4' 6"
BALCONY	4' 11" X 11' 0"

KING STREET WEST



EAST MOUNTAIN KEYPLAN



All dimensions and specifications are approximate. Certain plans are reverse or mirror image. Balcony square footages are estimated and may vary from that stated. Please see Sales Representative for details. Furniture not included. Refer to key plan for unit location and orientation. E. & O.E.

KING

HOME 1210 E



3BD.17

**3 Bedroom + Atelier
2 Bathroom**

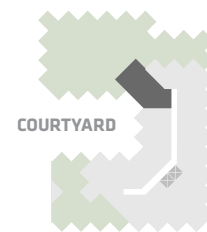
**Total Living:
1517 ft²**

Interior Living:
1183 ft²

Exterior Living:
334 ft²

LIVING	12' 8" X 12' 8"
DINING	11' 9" X 9' 11"
MASTER BD	10' 11" X 10' 6"
BEDROOM 2	8' 9" X 8' 6"
BEDROOM 3	13' 2" X 8' 8"
ATELIER	5' 6" X 5' 6"
TERRACE A	9' 1" X 6' 8"
TERRACE B	8' 3" X 6' 8"

KING STREET WEST



EAST MOUNTAIN KEYPLAN



All dimensions and specifications are approximate. Certain plans are reverse or mirror image. Balcony square footages are estimated and may vary from that stated. Please see Sales Representative for details. Furniture not included. Refer to key plan for unit location and orientation. E. & O.E.